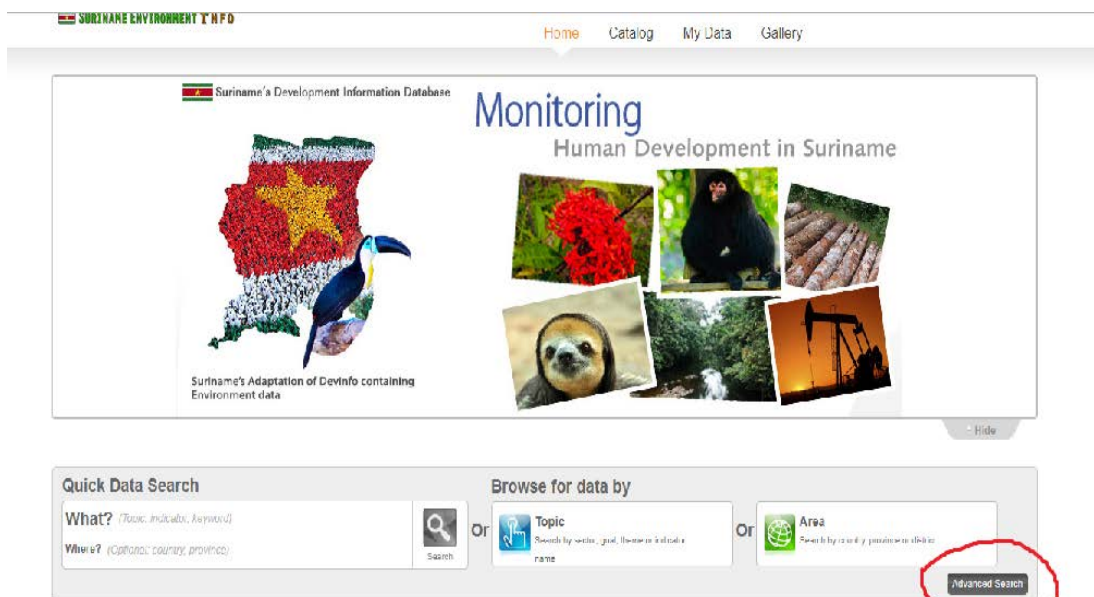


Stappen hoe om te gaan met de ABS databanken/ Steps how to use the GBS databases

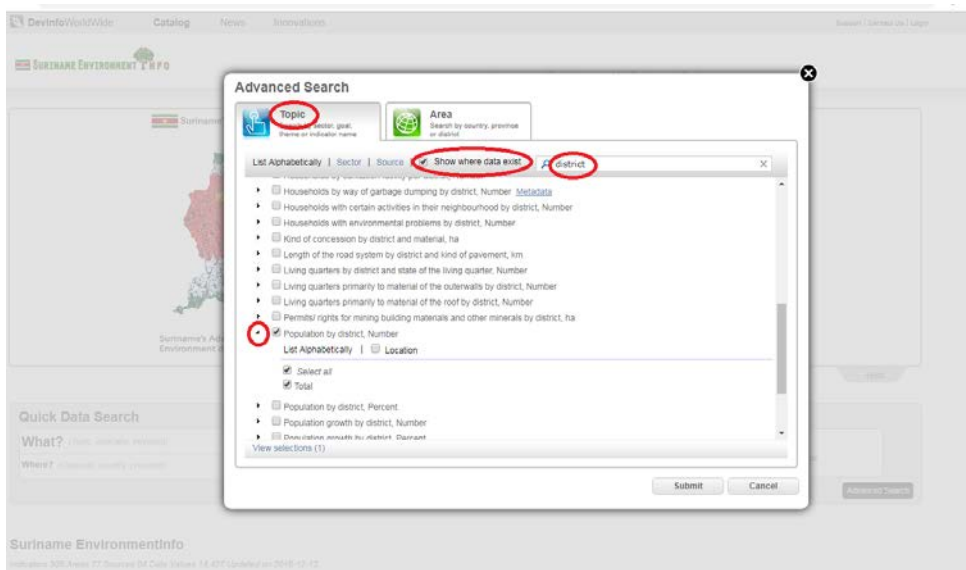
1. Stap 1: Ga naar de ABS website <http://www.statistics-suriname.org/> of naar de dataforall website: www.dataforall.org/ Step 1: Go to the GBS website: <http://www.statistics-suriname.org/> or the dataforall website: www.dataforall.org
2. Stap 2: Klik op een van de drie databanken/ Step 2: Click one of the three databases



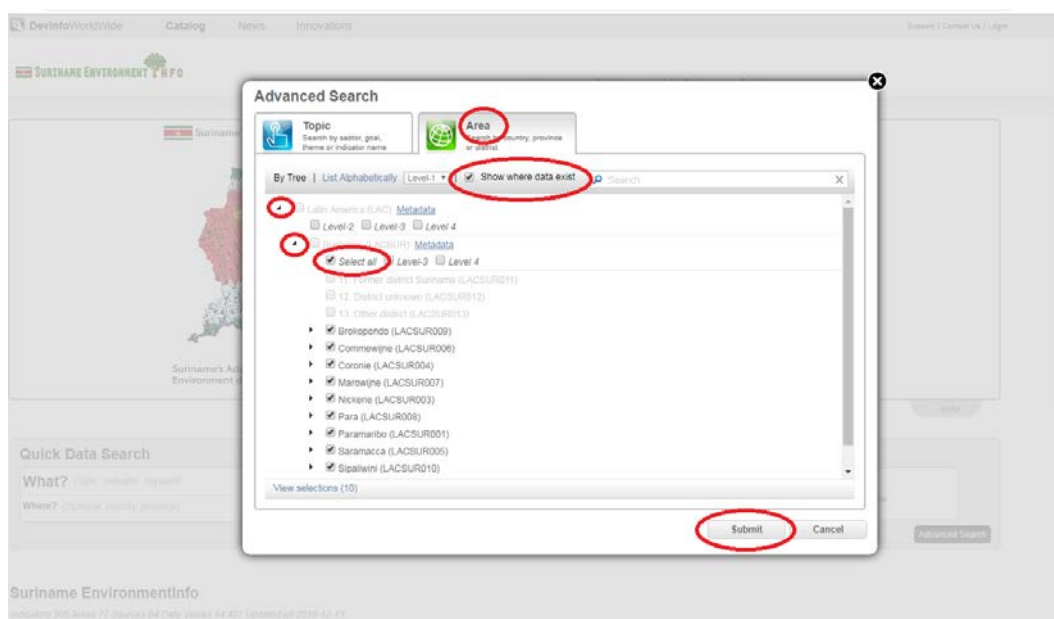
3. Stap 3: Klik op de databank "SurinameEnvironmentInfo" om het te openen. Er zijn 3 opties: "Quick Data Search", "Browse for data by" en "Area". Kies vb "Area" als optie en klik op "Advance search". Let wel: "Advance search" kan alleen gebruikt worden bij optie "Area" en niet bij "Quick Data Search" en "Browse for data by" / Step 3: Click on the database "SurinameEnvironmentInfo" to open it. There are 3 options: "Quick Data Search", "Browse for data by" and "Area". Choose option "Area" then click on "Advance Search". Note: "Advance search" can only be used for option "Area" and not for "Quick Data Search" and "Browse for data by".



- Step 4: Sta op de icon **“Topic”** in Advanced Search/ Step 4: Go on the icon **“Topic”** in Advanced Search.
 - Selecteer de **“Show where data exist”** knop/Select the **“Show where data exist”** button
 - Type bij de search icon een keyword vb district. Er komen verschillende indicatoren voor naar district/ Type a keyword e.g. district. Several indicators by district will appear.
 - Selecteer jouw indicator vb **Population by district, number** en vink dit aan. Klik de zwarte pijl ervoor om alle subgroepen te kunnen selecteren/ Select your indicator e.g. **Population by district, number** and mark this. Click the black arrow in front of the indicator to select all the subgroups.



- Step 5: Ga naar **“Area”** (boven) en vink **“Show where data exist”** aan. Klik op de zwarte pijl vóór Latin America, als deze open is klik ook op de zwarte pijl vóór Suriname. Selecteer **“Select all”** en als laatst klik je op **“Submit”**/ Go to **“Area”** (above) and mark **“Show where data exist”**. Click on the black arrow in front of Latin America, if this is open also click the black arrow in front of Suriname. Select **“Select all”** and then click **“Submit”**.



6. Stap 6: Voorbeeld van een tabel, grafiek en een map/ Examples of a table, graph and a map.

dataforall.org/SurinameEnvironmentInfo/libraries/asp/-dataview.aspx

DevInfoWorldWide Catalog News Innovations

SURINAME ENVIRONMENT INFO Home Catalog My Data

Visualization Settings

Table Line Column Bar Area Pie Map Pyramid Treemap Radar Scatter

Area Indicator Time Period Sorting Hide Columns

Population by district - Number

Time Period	Brokopondo	Commewijne	Coronie	Marowijne	Nickerie	Para	Paramaribo	Saramacca	Sipaliwini	Wanica
2004	14215	24649	2887	16642	36639	18749	242946	15980	34136	85986
2012	15909	31420	3391	18294	34233	24700	240924	17480	37065	118222

dataforall.org/SurinameEnvironmentInfo/libraries/asp/-dataview.aspx

DevInfoWorldWide Catalog News Innovations Support Contact Us Login

SURINAME ENVIRONMENT INFO Home Catalog My Data Gallery

Visualization Settings Save As Download Share

Table Line Column Bar Area Pie Map Pyramid Treemap Radar Scatter

Area Indicator Time Period Sorting Hide Columns

Population by district - Number

Source: The General Bureau of Statistics_Environment Statistics_December 2014

dataforall.org/SurinameEnvironmentInfo/libraries/asp/-dataview.aspx

DevInfoWorldWide Catalog News Innovations

Go to the DevInfo home page Explore DevInfo databases from around the world See the latest updates on DevInfo Download new and emerging DevInfo tools

SURINAME ENVIRONMENT INFO Home Catalog My Data Gallery

Visualization Settings Save As Download Share

Table Line Column Bar Area Pie Map Pyramid Treemap Radar Scatter

Area Indicator

Population by district, Number, Total (2012)

7. Stap 7: Aanpassen van je tabel, grafiek of kaart/ Adjusting your table, graph or map.

Tabel/ Table

The screenshot shows the 'Settings' menu for a table visualization. The 'Settings' tab is selected and circled in red. Below it, the 'Visualization' menu is open, with 'Pivot' and 'Swap' options also circled in red. The 'Area' menu is expanded, showing a list of districts: Brokopondo, Commewijne, Coronie, Marowijne, Nickerie, Para, Paramaribo, Saramacca, Sipaliwini, and Wanica. The table displays population data for 2004 and 2012 across these districts.

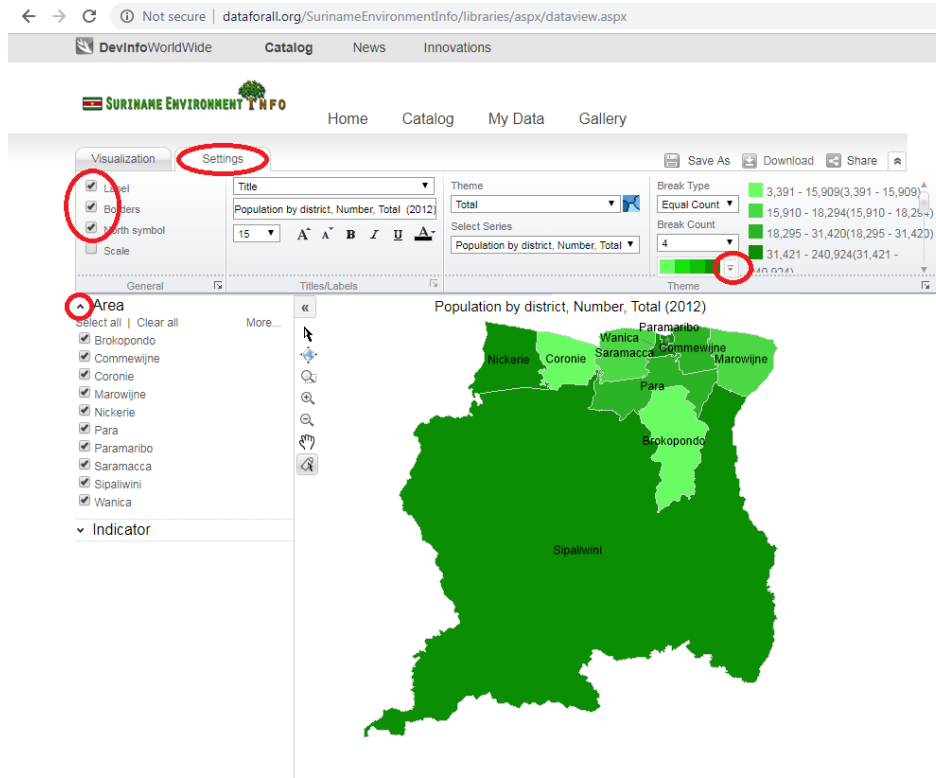
Time Period	Brokopondo	Commewijne	Coronie	Marowijne	Nickerie	Para	Paramaribo	Saramacca	Sipaliwini	Wanica
2004	14215	24649	2887	16642	36639	18749	242946	15980	34136	85986
2012	15909	31420	3391	18294	34233	24700	240924	17480	37065	118222

Grafiek/ Graph

The screenshot shows the same data forall.org interface, but with a bar chart visualization. The 'Settings' tab is selected and circled in red. The 'Visualization' menu is open, with 'Legend' and 'Chart' options circled in red. The 'Area' menu is expanded, showing the same list of districts. The bar chart displays population data for 2004 and 2012 across the districts. A callout box highlights the 2004 data for Paramaribo: 242946. The chart is set against a yellow background with a cyan grid.

Time Period	Brokopondo	Commewijne	Coronie	Marowijne	Nickerie	Para	Paramaribo	Saramacca	Sipaliwini	Wanica
2004	14215	24649	2887	16642	36639	18749	242946	15980	34136	85986
2012	15909	31420	3391	18294	34233	24700	240924	17480	37065	118222

Kaart/ Map



8. Stap 8: Het "saven" van je tabel, grafiek of kaart in een Image, XLM of KML/ Saving your table, graph or map as image, XLM or KML

- Klik op de **Download** knop rechts boven en selecteer hoe je de file wilt saven, als foto (Image) of in een excel file (XLS)/ Click on the **Download** button right above and select how you want to save your file as a picture (Image) or in an excel file (XLS)
- Als je de file als foto (Image) wilt saven, heb je 3 opties om dat te doen namelijk PNG, JPG en GIF. Kies vb PNG en dan op OK. De file komt dan in je Downloads/ If you save the file as picture (Image), you have 3 options namely PNG, JPG and GIF. Choose e.g. PNG and then click OK. Your file will be saved in your Downloads.

Algemeen Bureau voor de Statistiek | Suriname EnvironmentInfo - Data | Mail - Giovanna Amatoeran - O. X | +

dataforall.org/SurinameEnvironmentInfo/libraries/asp/view.aspx

DevInfoWorldWide Catalog News Innovations Support | Co

SURINAME ENVIRONMENT INFO Home Catalog My Data Gallery

Visualization Settings Save As **Download** Share

Label Borders North symbol Scale

Title: Population by district, Number, Total (2012)

Theme: Total

Break Type: Equal Count

Break Count: 4

Theme: 740,0243

Area

- Select all | Clear all
- Brokopondo
- Commewijne
- Coronie
- Marowijne
- Nickerie
- Para
- Paramaribo
- Saramacca
- Sipaliwini
- Wanica

Indicator

Population by district, Number, Total (2012)

District	Population Range
3,391 - 15,909	(3,391 - 15,909)
15,910 - 18,294	(15,910 - 18,294)
18,295 - 31,420	(18,295 - 31,420)
31,421 - 240,924	(31,421 - 240,924)

Equal Count 15,910 - 18,294(15,910 - 18,294)

Image Settings

Modify your settings here

Show Legend

Width: 1011

Height: 510

Image Format: PNG

- PNG
- JPG
- GIF

OK Cancel